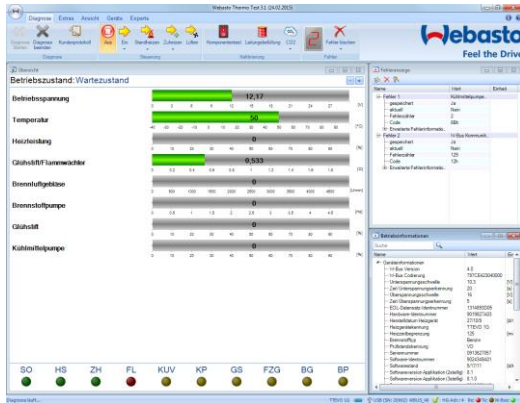


# WTT V3.1 release information



## Requirements:

- Standard PC with Microsoft Windows Vista, 7, 8 (32 or 64 bit)
- Preinstalled Microsoft .NET 4.0
- Minimum 100 MB free disk space
- A free USB port
- Webasto USB diagnostic adapter V2.0 or V2.2 (ID 9008487D)

## New features in V3.1:

- NEW: Languages: Turkish, Dutch, Slovenian, Czech, Hungarian
- NEW: Customer protocol can be saved automatically (default: off)
- NEW: Hint for not saved customer report during WTT exit
- NEW: W-Bus LED in status bar (green: communication ok, red: disturbed)
- NEW: Added count-down for fuel priming
- NEW: Measurement protocol can optionally have short headers (default: off)
- NEW: A running measurement logging is displayed by symbol in the status bar
- NEW: Measurement logging file is optionally requested at every start (default: off)
- NEW: Background saving of WTT sessions can be switched off (default: on)
- NEW: Added WTT 2 shortcuts
- NEW: WTT version is printed in customer protocol
- CHANGE: Absolut time format changed to in hh:mm:ss:ms
- CHANGE: Start window (device selection) reworked
- CHANGE: Options and settings reworked
- CHANGE: Added time display in WTT session player
- CHANGE: IPCU/GGW parameter list reworked
- CHANGE: Updated help file
- CHANGE: Date is saved in measurement protocol
- FIX: Stability fixes of the USB communication
- FIX: Bugfixes at WTT session save and play
- FIX: Bugfix at PDF generation of customer reports

## MultiControl:

- NEW: Read out error memory
- NEW: Display hardware/software version (requires firmware > V1.7)
- CHANGE: New menu for dataset functions
- FIX: All parameter localised
- FIX: Fixed Limitation of heat duration